

HOMMIÈS

STUDIO

FABRICS



Haute Couture Interiors

HOMMÉS was born from a skilled merge of visionary identities, with distinctive perspectives of design, art, fashion, and cultures. Our brand's life motto is introducing an Haute Couture concept in the Interior Design industry.

In HOMMÉS we believe that a house must express the owner's soul, as clothes express the personality of the person who dresses them. With the clear intention of introducing a nouveau Haute Couture Interiors concept, presenting spaces with bold and unique identities, we have focused ourselves on the deep study of different interior trends throughout the 20th and the 20th century, paying special attention to how they can fit contemporary spaces. With that purpose in mind, we craft our very own identity with precision, challenging the boundaries of the interior into the limit.



HS LENCASTER 4

/ LYNEN TYPE

HS RICHMOND 8

/BOUCLE

HS SUTTON 10

/ VELVET

HS KENSINGTON 15

/ LEATHER

HS HOXTON 17

/ ECO PU LEATHER

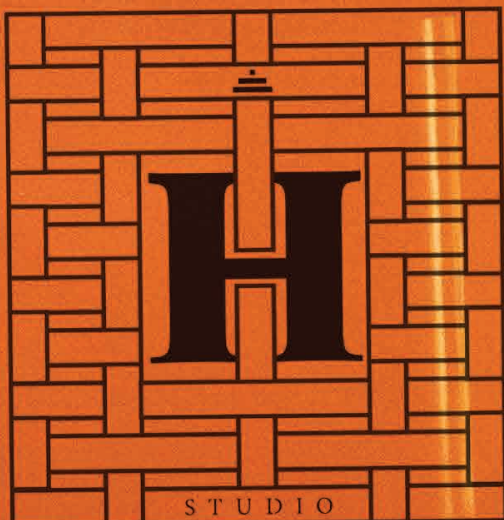
HS BRENT 21

/ FAUX FUR

COM FABRIC OPTION 23

/ BOUCLE

/ ECO SUEDE





HS Lencaster_001



HS Lencaster_002



HS Lencaster_003



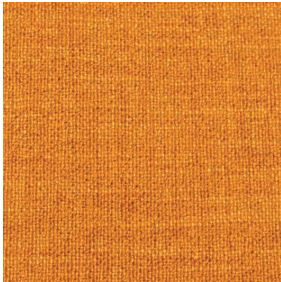
HS Lencaster_004



HS Lencaster_005



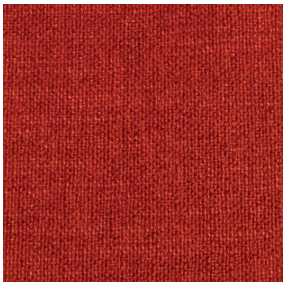
HS Lencaster_006



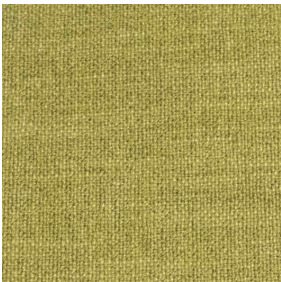
HS Lencaster_007



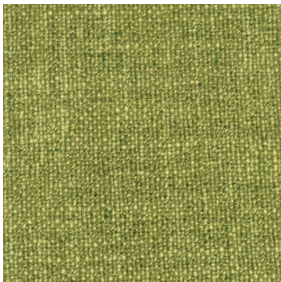
HS Lencaster_008



HS Lencaster_009



HS Lencaster_010



HS Lencaster_011



HS Lencaster_012



HS Lencaster_013



HS Lencaster_014



HS Lencaster_015



HS Lencaster_016



HS Lencaster_017



HS Lencaster_018



HS Lencaster_019



HS Lencaster_020



HS Lencaster_021



HS Lencaster_022

LINEN TYPE
DESCRIPTION: Upholstery fabric, Woven, Tabby weave
COMPOSITION: 78% polyester, 22% cotton
WIDTH: 140 cms (55.1 ")
MARTINDALE: 100 000



HS Lencaster_023



HS Lencaster_024



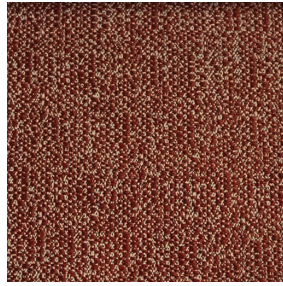
HS Lencaster_025



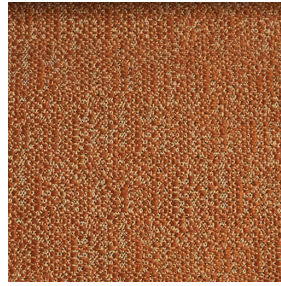
HS Lencaster_026



HS Lencaster_027



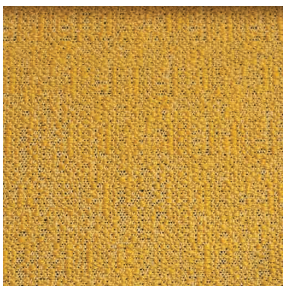
HS Lencaster_028



HS Lencaster_029



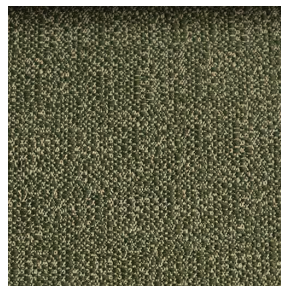
HS Lencaster_030



HS Lencaster_031



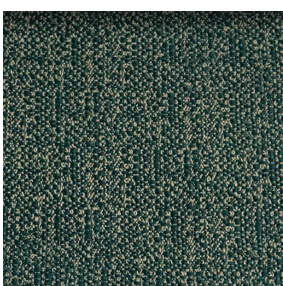
HS Lencaster_032



HS Lencaster_033



HS Lencaster_034



HS Lencaster_035



HS Lencaster_036



HS Lencaster_037



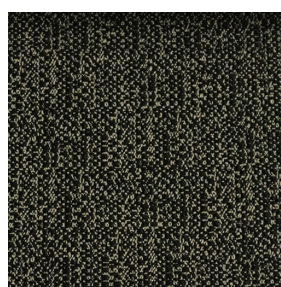
HS Lencaster_038



HS Lencaster_039



HS Lencaster_040

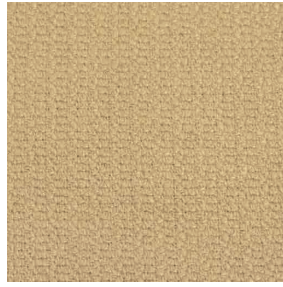


HS Lencaster_041

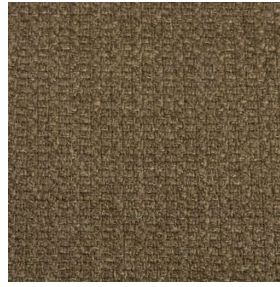
LINEN TYPE
 DESCRIPTION: Woven fabric
 COMPOSITION: 89% PES,
 6% WO, 5% VI
 WIDTH: 140 cms (55.1")
 MARTINDALE: 100 000



HS Lencaster_042



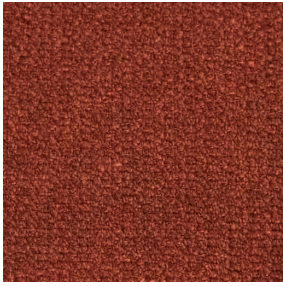
HS Lencaster_043



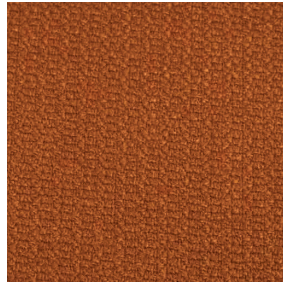
HS Lencaster_044



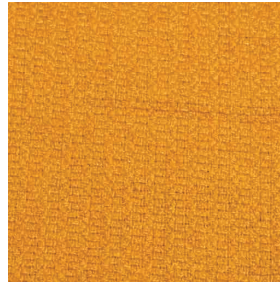
HS Lencaster_045



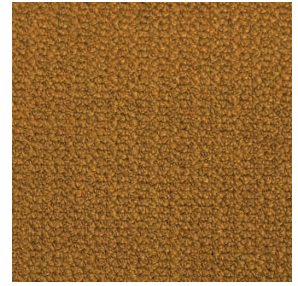
HS Lencaster_046



HS Lencaster_047



HS Lencaster_048



HS Lencaster_049



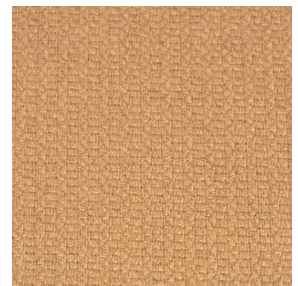
HS Lencaster_050



HS Lencaster_051



HS Lencaster_052



HS Lencaster_053



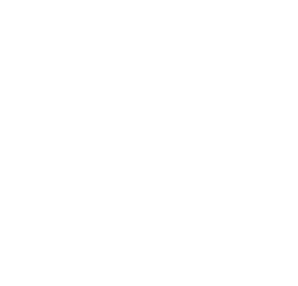
HS Lencaster_054



HS Lencaster_055



HS Lencaster_056



HS Lencaster_057

LINEN TYPE
DESCRIPTION: Woven fabric
COMPOSITION: 100% PES
WIDTH: 142 cms (55.9 ")
MARTINDALE: 100 000



HS RICHMOND_001



HS RICHMOND_002



HS RICHMOND_003



HS RICHMOND_004



HS RICHMOND_005



HS RICHMOND_006

BOUCLE

DESCRIPTION: Yarn Dyed Jacquard Bouclé very resistant

COMPOSITION: 34%VI + 33%PC + 17%WO + 8%PL + 4%LI + 4%CO

WIDTH: 140 cms (55.1 ")

MARTINDALE: 50 000



HS RICHMOND_007



HS RICHMOND_008



HS RICHMOND_009

BOUCLE

DESCRIPTION: Chenille Boucle Weave. Combination of sumptuous chenille and textural bouclé yarns

COMPOSITION: 48% VI 38% CO 8% PL 6% PC

WIDTH: 140 cms (55.1 ")

MARTINDALE: 35 000



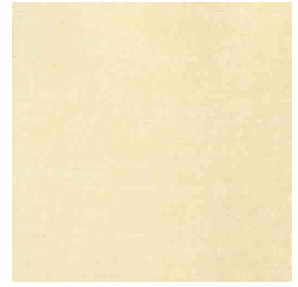
HS SUTTON_001



HS SUTTON_002



HS SUTTON_003



HS SUTTON_004



HS SUTTON_005



HS SUTTON_006



HS SUTTON_007



HS SUTTON_008



HS SUTTON_009



HS SUTTON_010



HS SUTTON_011



HS SUTTON_012



HS SUTTON_013



HS SUTTON_014



HS SUTTON_015



HS SUTTON_016



HS SUTTON_017



HS SUTTON_018



HS SUTTON_019



HS SUTTON_020



HS SUTTON_021



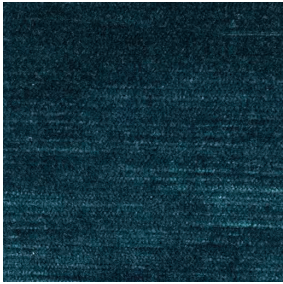
HS SUTTON_022



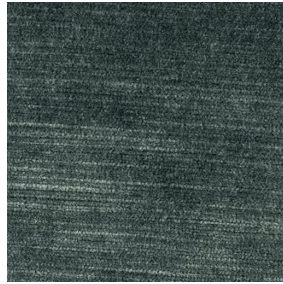
HS SUTTON_023



HS SUTTON_024



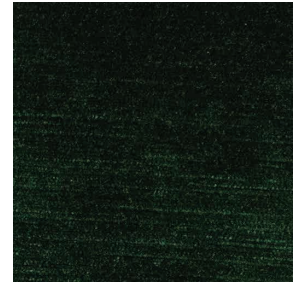
HS SUTTON_025



HS SUTTON_026



HS SUTTON_027



HS SUTTON_028



HS SUTTON_029



HS SUTTON_030



HS SUTTON_031



HS SUTTON_032



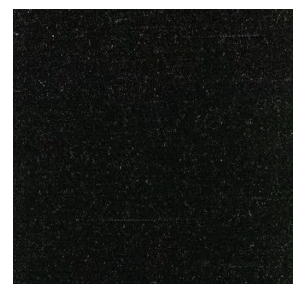
HS SUTTON_033



HS SUTTON_034



HS SUTTON_035



HS SUTTON_036

VELVET

DESCRIPTION: A tactile ribbed effect, stain repellent finish

COMPOSITION: 100% PL

WIDTH: 140 cms (55.1 ")

MARTINDALE: 100 000



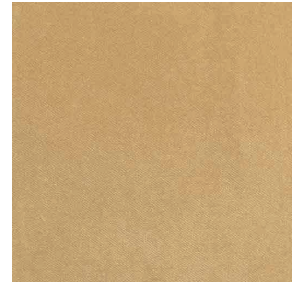
HS SUTTON_037



HS SUTTON_038



HS SUTTON_039



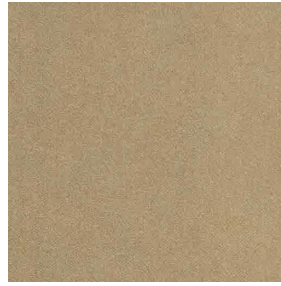
HS SUTTON_040



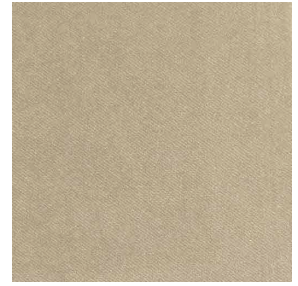
HS SUTTON_041



HS SUTTON_042



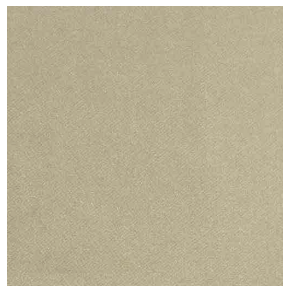
HS SUTTON_043



HS SUTTON_044



HS SUTTON_045



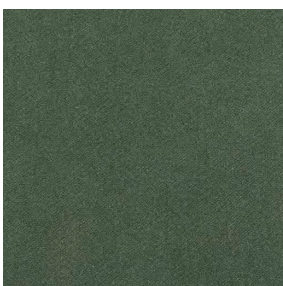
HS SUTTON_046



HS SUTTON_047



HS SUTTON_048



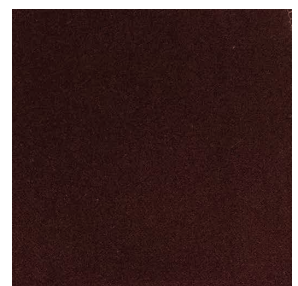
HS SUTTON_049



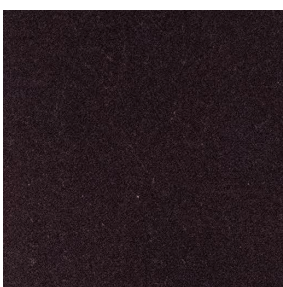
HS SUTTON_050



HS SUTTON_051



HS SUTTON_052



HS SUTTON_053



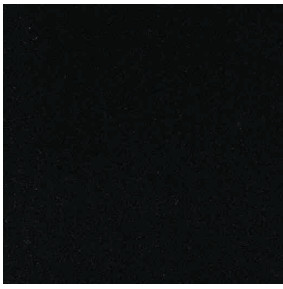
HS SUTTON_054



HS SUTTON_055



HS SUTTON_056



HS SUTTON_057



HS SUTTON_058



HS SUTTON_059



HS SUTTON_060



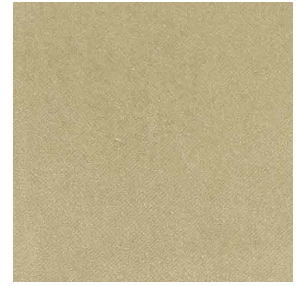
HS SUTTON_061



HS SUTTON_062



HS SUTTON_063



HS SUTTON_064



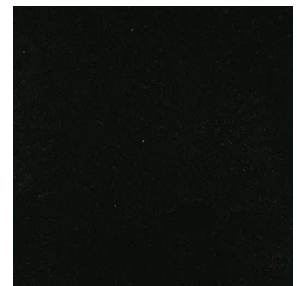
HS SUTTON_065



HS SUTTON_066



HS SUTTON_067



HS SUTTON_068

VELVET

DESCRIPTION: Cotton-look velvet with an exceptionally soft and supple handle, comes with practical EasyClean technology, wipe the fabric clean using just water

COMPOSITION: 100% PL

WIDTH: 140 cms (55.1 ")

MARTINDALE: 100 000



HS SUTTON_069



HS SUTTON_070



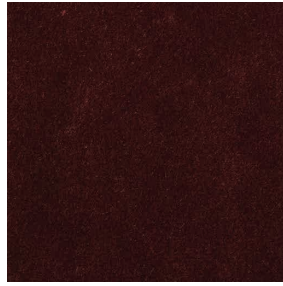
HS SUTTON_071



HS SUTTON_072



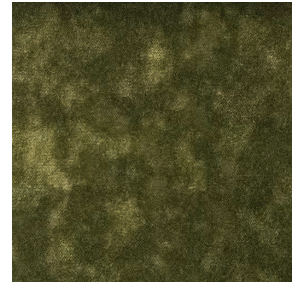
HS SUTTON_073



HS SUTTON_074



HS SUTTON_075



HS SUTTON_076



HS SUTTON_077



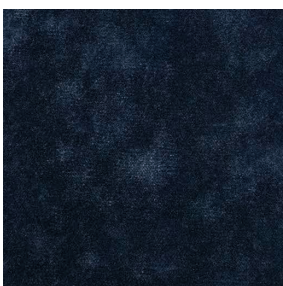
HS SUTTON_078



HS SUTTON_079



HS SUTTON_080



HS SUTTON_081



HS SUTTON_082



HS SUTTON_083



HS SUTTON_084



HS SUTTON_085



HS SUTTON_086

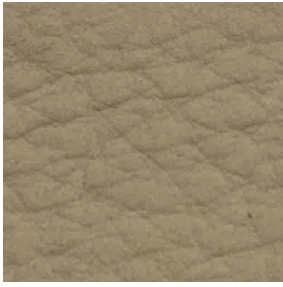
VELVET

DESCRIPTION: Woven, velour fabric

COMPOSITION: pile: 100% polyester, groundmaterial: 100% polyester

WIDTH: 133 cms (52.3 ")

MARTINDALE: 40 000



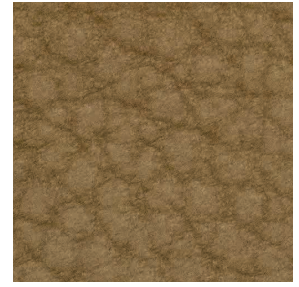
HS KENSINGTON_001



HS KENSINGTON_002



HS KENSINGTON_003



HS KENSINGTON_004



HS KENSINGTON_005



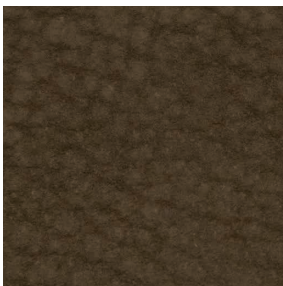
HS KENSINGTON_006



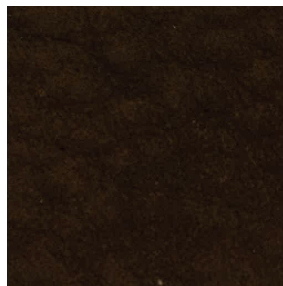
HS KENSINGTON_007



HS KENSINGTON_008



HS KENSINGTON_009



HS KENSINGTON_010



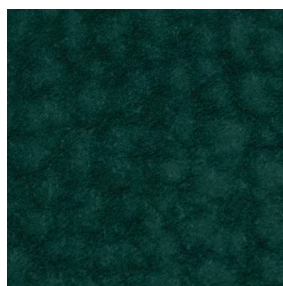
HS KENSINGTON_011



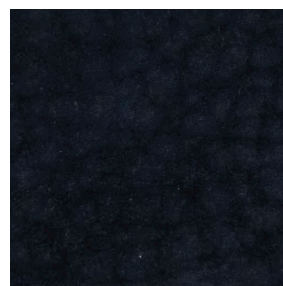
HS KENSINGTON_012



HS KENSINGTON_013



HS KENSINGTON_014



HS KENSINGTON_015



HS KENSINGTON_016



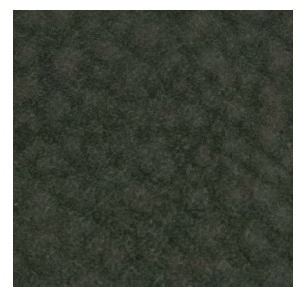
HS KENSINGTON_017



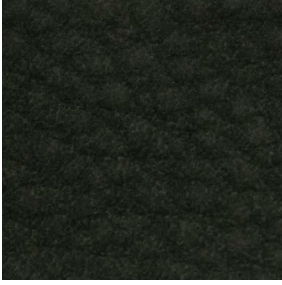
HS KENSINGTON_018



HS KENSINGTON_019



HS KENSINGTON_020



HS KENSINGTON_021

NATURAL LEATHER
DESCRIPTION: Natural leather, soft feel
COMPOSITION: Natural Leather
WIDTH: 5m² hide (196.8 ")



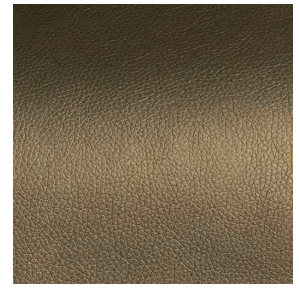
HS HOXTON_001



HS HOXTON_002



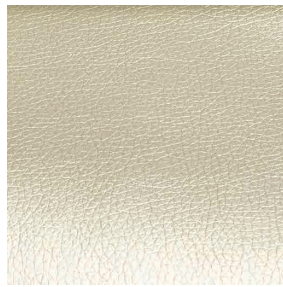
HS HOXTON_003



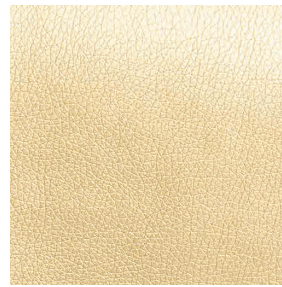
HS HOXTON_004



HS HOXTON_005



HS HOXTON_006



HS HOXTON_007



HS HOXTON_008



HS HOXTON_009



HS HOXTON_010



HS HOXTON_011



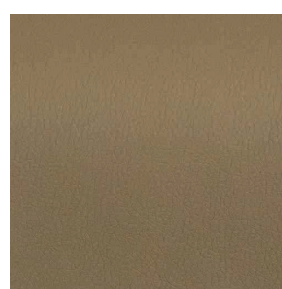
HS HOXTON_012



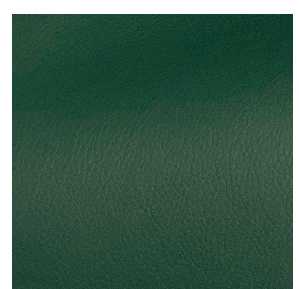
HS HOXTON_013



HS HOXTON_014



HS HOXTON_015



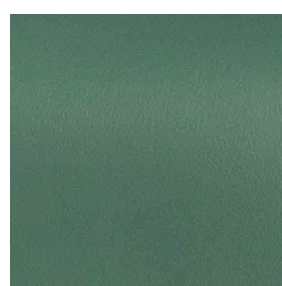
HS HOXTON_016



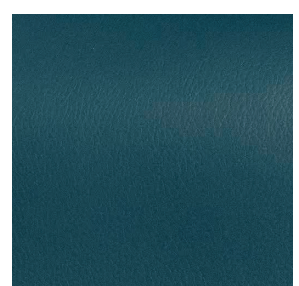
HS HOXTON_017



HS HOXTON_018



HS HOXTON_019



HS HOXTON_020



HS HOXTON_021



HS HOXTON_022



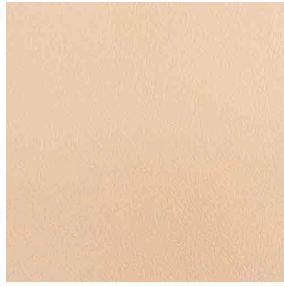
HS HOXTON_023



HS HOXTON_024



HS HOXTON_025



HS HOXTON_026



HS HOXTON_027



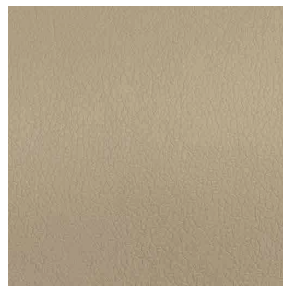
HS HOXTON_028



HS HOXTON_029



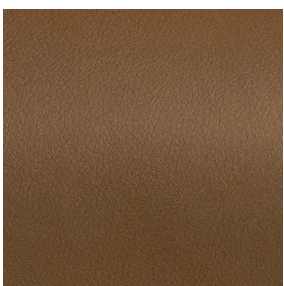
HS HOXTON_030



HS HOXTON_031



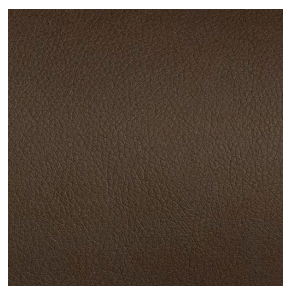
HS HOXTON_032



HS HOXTON_033



HS HOXTON_034



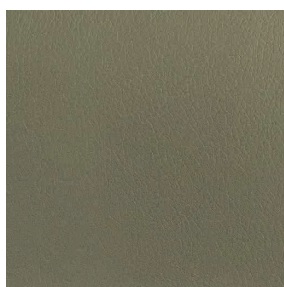
HS HOXTON_035



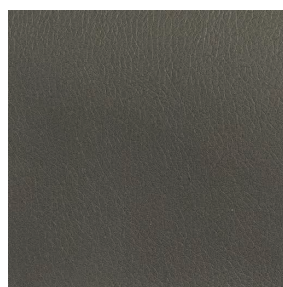
HS HOXTON_036



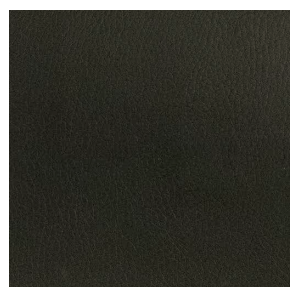
HS HOXTON_037



HS HOXTON_038



HS HOXTON_039



HS HOXTON_040

EC PU LEATHER
DESCRIPTION: High performance PU leather
COMPOSITION: 50% PU 30% PL 20% CO
WIDTH: 137 cms (53.9 ")
MARTINDALE: 100 000



HS HOXTON_041



HS HOXTON_042



HS HOXTON_043



HS HOXTON_044



HS HOXTON_045



HS HOXTON_046



HS HOXTON_047



HS HOXTON_048



HS HOXTON_049



HS HOXTON_050



HS HOXTON_051

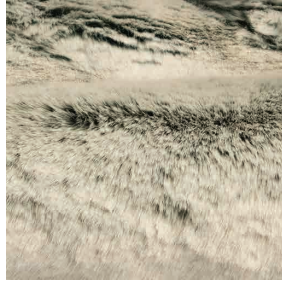


HS HOXTON_052

ECO SUEDE
DESCRIPTION: ECO Nubuck, double sided fabric
COMPOSITION: 100% PES
WIDTH: 142 cms (55.9 ")
MARTINDALE: 45 000



HS Brent_001



HS Brent_002



HS Brent_003

FAUX FUR
DESCRIPTION: A lusciously dense, faux fur with a soft sheen
COMPOSITION: 20% PL 80% PC
WIDTH: 174 cms (68.5 ")
MARTINDALE: N/A



HS BRENT_004



HS BRENT_005



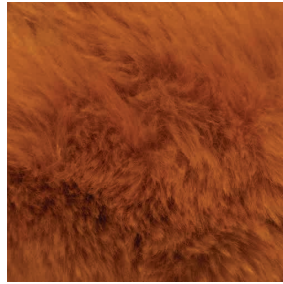
HS BRENT_006



HS BRENT_007



HS BRENT_008



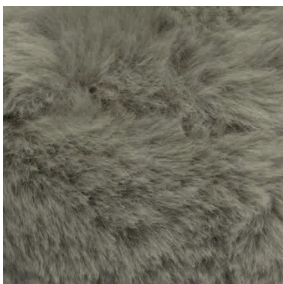
HS BRENT_009



HS BRENT_010



HS BRENT_011

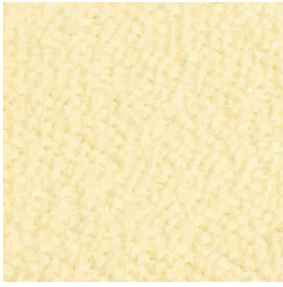


HS BRENT_012



HS BRENT_013

FAUX FUR
DESCRIPTION: Faux fur with a soft sheen
WIDTH: 140 cms (55.1")
MARTINDALE: N/A



COM Fabric Option_001



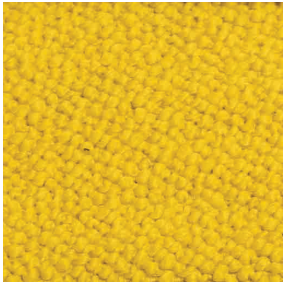
COM Fabric Option_002



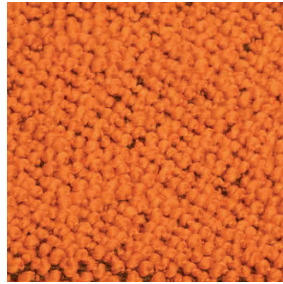
COM Fabric Option_003



COM Fabric Option_004



COM Fabric Option_005



COM Fabric Option_006



COM Fabric Option_007



COM Fabric Option_008

BOUCLE

DESCRIPTION: A pretty, dense bouclette in soft wool

COMPOSITION: 33% VW 32% Po 28% C 7% P

WIDTH: 133 cms (52.3 ")

MARTINDALE: 30 000

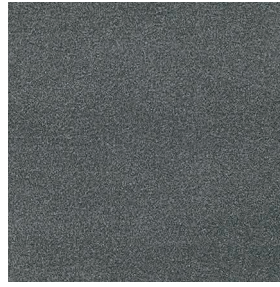
COM FABRIC OPTION - 2



COM Fabric Option_023



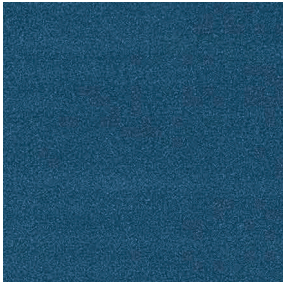
COM Fabric Option_024



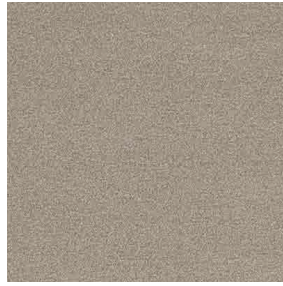
COM Fabric Option_025



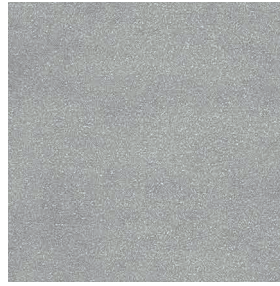
COM Fabric Option_026



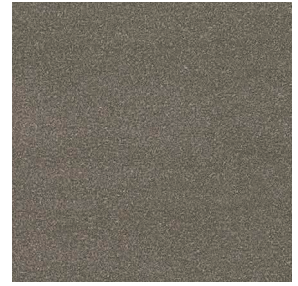
COM Fabric Option_027



COM Fabric Option_028



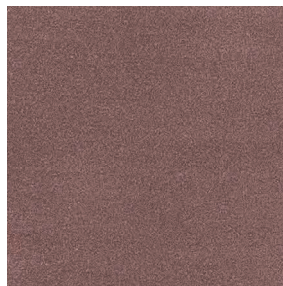
COM Fabric Option_029



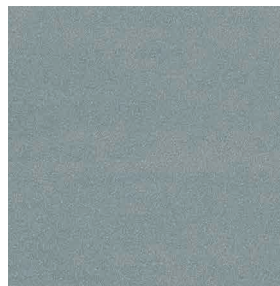
COM Fabric Option_030



COM Fabric Option_031



COM Fabric Option_032



COM Fabric Option_033

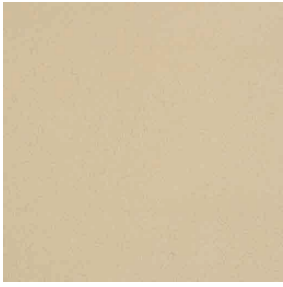


COM Fabric Option_034

BOUCLE

DESCRIPTION: This outdoor bouclé weave is all about the texture, blurring the lines between indoor and outdoor usability
COMPOSITION: 100% PP
WIDTH: 134 cms (52.7 ")
MARTINDALE: 45 000

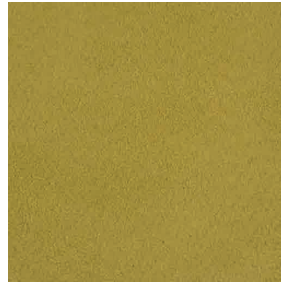
COM FABRIC OPTION - 3



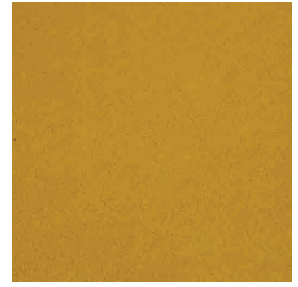
COM Fabric Option_009



COM Fabric Option_010



COM Fabric Option_011



COM Fabric Option_012



COM Fabric Option_013



COM Fabric Option_014



COM Fabric Option_015



COM Fabric Option_016



COM Fabric Option_017



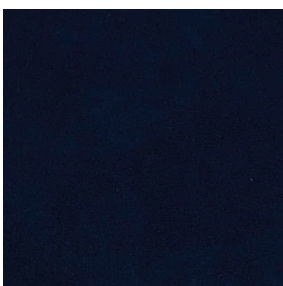
COM Fabric Option_018



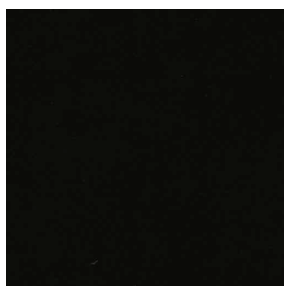
COM Fabric Option_019



COM Fabric Option_020



COM Fabric Option_021



COM Fabric Option_022

ECO SUEDE
DESCRIPTION: Double Sided Faux Suede
COMPOSITION: 93% PL 7% PU
WIDTH: 142 cms (55.9 ")
MARTINDALE: 30 000



HOMMÉS

STUDIO

